

# Peak Music Festivals

## Participant Instructions – Red Oak High School 2019

**Please arrive at least 30 minutes prior to your scheduled warm-up time.**

If you will be delayed, please call the Festival Site at the number on the Peak Website and let the Festival Administrator know.

Remember to Bring:

- Three (3) copies of your numbered scores
- Three (3) copies of your seating chart showing chairs, stand, equipment
- One (1) completed Announcer's Form

Note: Risers are not used at any Peak Festival Site

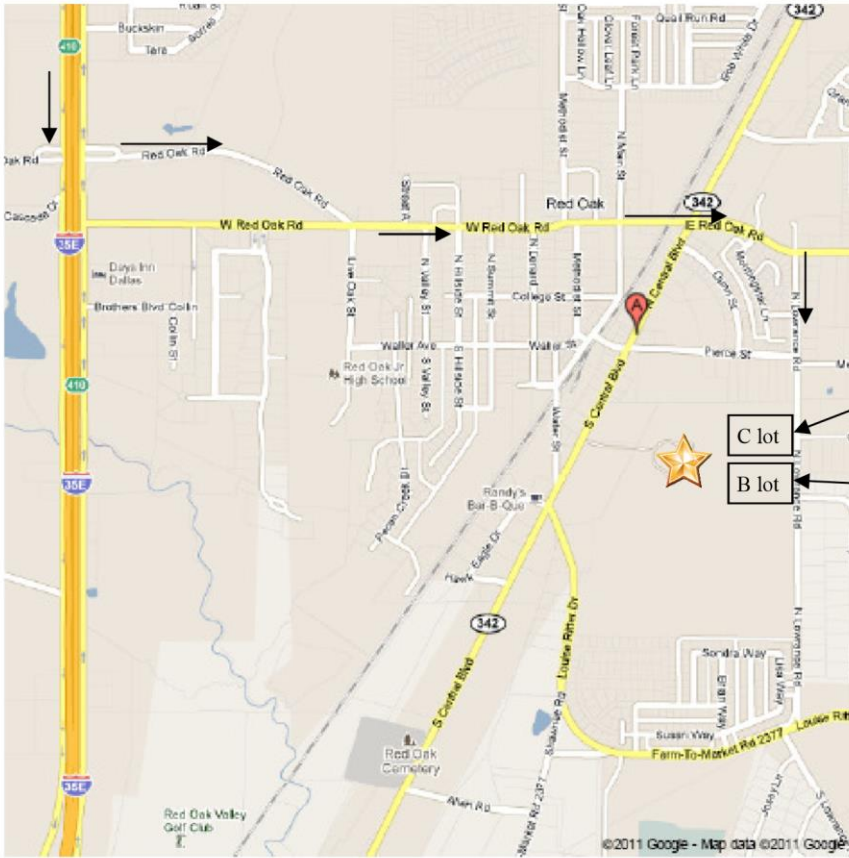
**Facility Address:** 220 TX-342  
Red Oak, TX 75154

### Directions:

- From I-35, exit at Red Oak Road and go East (follow the arrows). There is a bit of a left turn at the light where Red Oak Rd and W. Red Oak Rd. converge.
- Continue on Red Oak Rd. through the intersection at FM342, and turn RIGHT (south) on Lowrance Rd. (following the arrows)
- After passing Pierce Rd, the entrances to the school will be on your right. Cars enter at Lot C, and buses ONLY enter in Lot B.

### Notes

- This is the BACK of the school. If you come in the front entrance of the school (from 342), you will have a challenging time negotiating your way around to the back. If you follow the above instructions, that will put in the back where you need to be.
- Buses should not have to try and drop off students along the curb. There are plenty of parking spaces in the bus lot, and the distance is not very far at all. Your buses may stay in this lot while you are inside.
- If you are arriving around school start or end times (roughly 8 am and 4 pm), expect a lot of traffic—cars and buses - around the school. If you have a warm-up time near these times, you probably need to plan on arriving a good 15-20 minutes earlier than you think. Our school buses actually do not park in the bus lot, so again you should enter that C lot and park your buses, rather than trying to drop students off along the curb.
- Refer to the campus map for more details about student entrance, room locations, and the location of the large percussion load in (if you have a truck and need it).



## IMPORTANT

Parent's and Friends coming to listen may enter at the Auditorium without having to check-in at the front office.

## CHECK IN

Upon arrival please check in at the contest office located in the auditorium foyer and leave your Judges' Scores, Seating Charts, and Announcer Script.

## INSTRUMENT CASE STORAGE

Leave as many instrument cases as possible on your buses. Once inside there is minimal room to store cases and personal belongings. We are not responsible for lost items.

## STUDENT CHANGING

Changing rooms are not available. Restrooms are the only option for student changing.

## **WARMUP ROOM**

Time in the warmup room includes moving and setup as well as actual warm-up time. Please be ready to exit the room when requested.

We recommend that you bring your own electronic device with tuner/metronome apps that you are accustomed to using for your time in the warmup room.

## **EQUIPMENT AVAILABLE ON STAGE**

Bass Drum, Xylophone, Marimba, vibes, four (4) timpani, orchestra bells, chimes, gong, podium, stands & chairs. Bring your own sticks, mallets, snare drums, cymbals and anything else you need that is not listed. Riser are not used at any Peak Festival sites.

## **PERFORMANCE**

There is no prescribed music list. Groups may play either 2 or 3 selections. Uniforms are optional.

The goal of Peak Festivals is to provide a quality performance experience for all students. We do everything possible to make sure that we stay on schedule and that when it is your performance time it is your time to shine and for your students to take it all in, enjoy the experience and do their best.

## **FESTIVAL ETIQUETTE**

Students are encouraged to stay and hear other groups but quiet must prevail when a group is performing. No one is to enter or leave while a group is playing. Also caution students to keep noise to a minimum in the corridors and foyer of the building. No instruments are allowed in the audience area of the concert hall.

## **RECORDINGS**

DB Audio (David Burks) is the recording company for Peak Music Festivals. Directors will receive a CD immediately after their performance and DB Audio will keep a digital master.

## **PHOTOS**

Peak Classic Festivals do not include group photos.

## **JUDGES' CRITIQUE SHEETS**

Critique sheets will be emailed to you from each judge shortly after your performance has concluded.

## **CHECK OUT**

After performing, stop at the contest office to pick up:

- Results Sheet
- Scores
- Trophies

**AWARDS** □ **Divisional Trophy** – All Groups

- **Most outstanding Group Trophy** – Awarded to one middle school band, one middle school orchestra, one high school band AND one high school orchestra at each day of the festival. Winning score must be a 1st division.

**STAYING ON SCHEDULE**

We are under contract to leave the building at the conclusion of the Festival. If you have to wait for buses, let us know in advance. We must vacate the building at closing time

**CANCEL AND REFUND POLICY**

In the event you must cancel your performance, our cancel and refund policy can be viewed on our website. <http://www.peakmusicfestivals.org>

**THANK YOU FOR PARTICIPATING IN PEAK MUSIC FESTIVALS!**